



Current Problems with City of Park City Storm Drains

1. Areas without proper drainage are breeding grounds for mosquitoes.
2. Difficult to maintain due to wet ground, steep grades, and rough surfaces.
3. Stagnant Water can harbor a wide-range of diseases.
4. It is expensive to maintain.
5. It is a place for trash to accumulate.
6. Sediment traps require lots of cleaning.
7. It would stop Gap erosion methods.
8. It create natural paths for wildlife to entre the City.



**For Additional Information on
how to keep Park City
Waterways clean**

Please visit

WWW.PARKCITYKS.COM

About Us>Public Works

Park City Public Works
1941 E. 61st St. N.
Park City, KS 67219

Phone: 316-744-2026
Fax: 316-744-3865
E-mail:
Publicworks@parkcityks.com

Storm Water Management

 City of Park City, Kansas



WWW.PARKCITYKS.COM

What is a Storm Water Utility & Why is it Necessary?

A Storm Water utility is a legally authorized "public enterprise fund", adopted by City Ordinance and is similar to the water and sewer utilities. It is established to finance the construction and/or reconstruction of portions of the storm water system in the City of Park City.

Storm Water control was relegated to a supporting role in our street department. While our water and sewer systems are operated as revenue generating enterprise funds, funding for storm water generally remained as part of the overall street maintenance budget. Consequently, comprehensive planning for our storm water program were given a low priority. The Storm Water Utility will allow the City to maintain and update storm water infrastructure, properly manage the environmental impact of storm water pollution and to provide adequate flood protection.

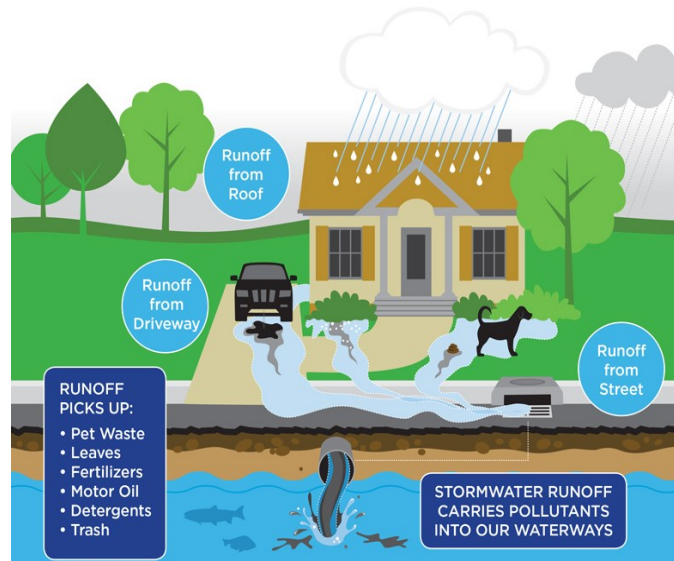
How did the City of Park City develop it's Storm Water Utility Program?

A Storm water Advisory Board (SWAB) was formed in 2017 to evaluate the current storm water program and determined that a higher level of service was needed. The SWAB brought their recommendations to the Park City Council which led to the adoption of a Storm Water utility fee. These funds, collected through your monthly utility bill, are placed in a dedicated fund to implement a Storm water program that directly supports maintenance and upgrades of existing storm drain systems, street sweeping & leaf collection, maintenance of storm water basins, development of flood & pollution control measures, and support water quality programs that service the users.

How Can We Prevent Storm Water Runoff?

If our Community takes measures to prevent erosion and sediment runoff from entering our storm water system, we can drastically improve the conditions of our local waterways. Here are some examples:

- Contain waste oil and take it to a recycling center.
- Consider using a Car Wash.
- Do not use a gutter or storm inlet as a means of disposing of yard waste.
- Don't fertilize your lawn if there is a chance for rain.
- Sweep your driveway rather than washing it down.
- Use pesticides sparingly on lawns and gardens, and only after considering more natural methods of control.
- Utilize yard waste composting facilities for leaves and grass clippings or try a mulching mower. Contain waste oil and take it to a recycling center.



How are Fees Calculated?

The Park City Council adopted a set user fee for the Storm Utility Program based on Zoning.

- If your Home/Business/Property is in a Residential zoned area, the user fee is \$1.00/month which will be added to your monthly utility bill.
- If your Home/Business/Property is in a Commercial zoned area, the user fee is \$5.00/month which will be added to your monthly utility bill.
- If your Home/Business/Property is in an Industrial Zoned area, the user

When does the new Storm Water utility fee go into affect?

August 1, 2018

Why will non-residential and tax-exempt properties be required to pay?

All customers including Federal, State and City-owned properties, that have impervious surfaces must pay regardless of ownership or tax status because they generate runoff.